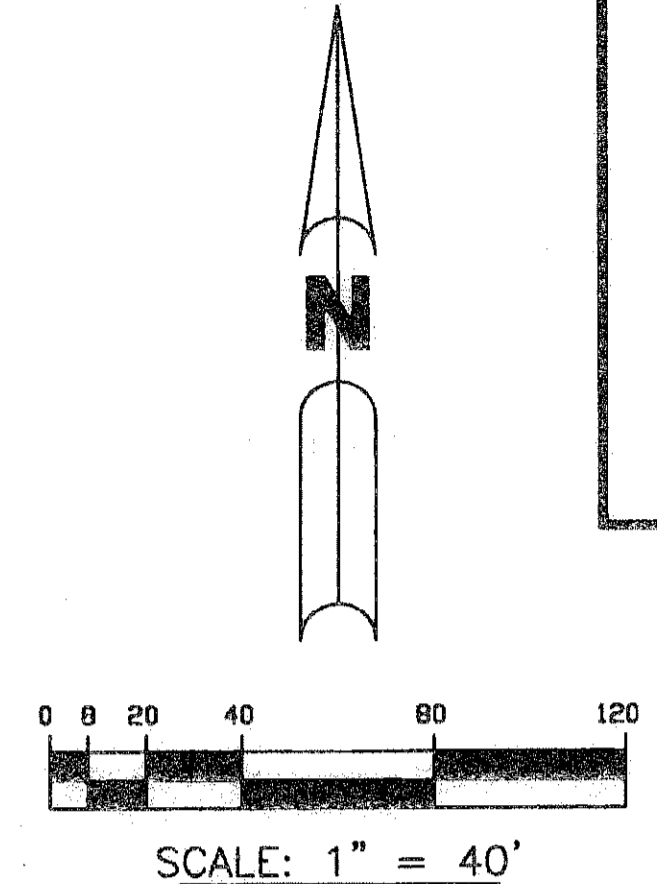


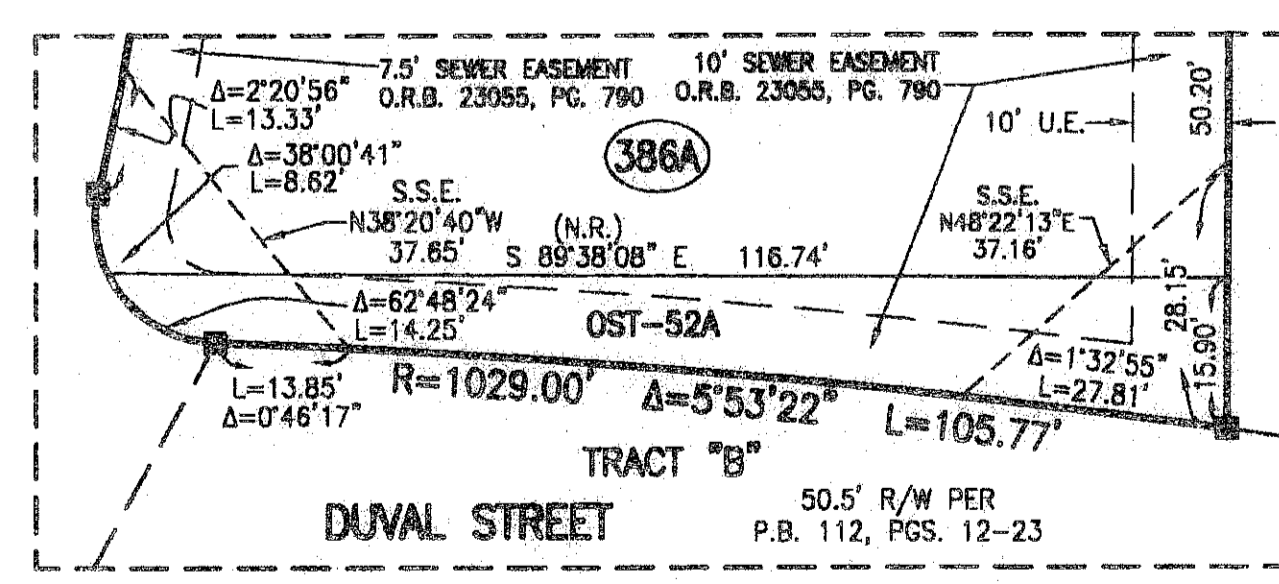
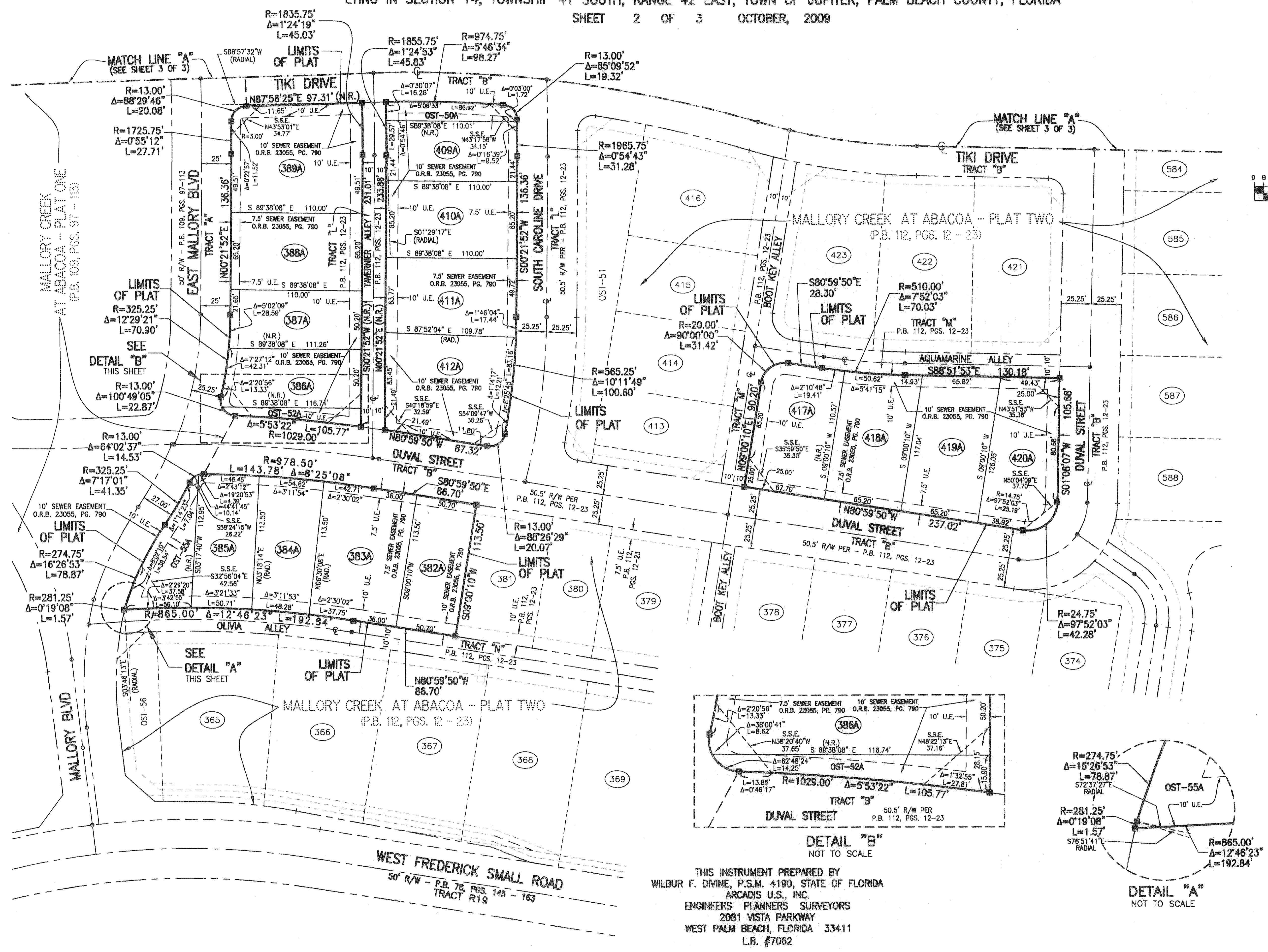
MALLORY CREEK AT ABACOA - PLAT TWO - REPLAT NO. 1

BEING A REPLAT OF LOTS 382 THROUGH 389, 402 AND 409 THROUGH 412, 417 THROUGH 420 AND 429 THROUGH 439 AND TRACTS OST-47, OST-48, OST-50, OST-52, OST-54, OST-55 AND OST-59 ACCORDING TO MALLORY CREEK AT ABACOA - PLAT TWO AS RECORDED IN PLAT BOOK 112, PAGES 12 THROUGH 23, OF THE PUBLIC RECORDS OF PALM BEACH COUNTY, FLORIDA, LYING IN SECTION 14, TOWNSHIP 41 SOUTH, RANGE 42 EAST, TOWN OF JUPITER, PALM BEACH COUNTY, FLORIDA

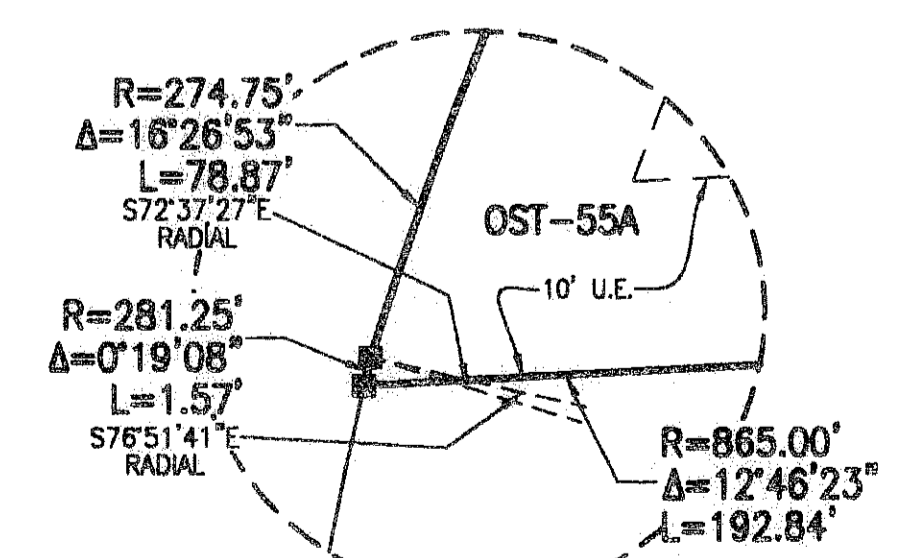
SHEET 2 OF 3 OCTOBER, 2009



- LEGEND:**
- - SET PERMANENT REFERENCE MONUMENT, L.B. #7062
 - - FOUND PERMANENT REFERENCE MONUMENT, L.B. #7062
 - - FOUND PERMANENT CONTROL POINT, L.B. #7062
 - R - RADIUS
 - Δ - DELTA ANGLE
 - L - ARC LENGTH
 - C - CENTERLINE
 - AC - ACRES
 - BLVD - BOULEVARD
 - CB - CHORD BEARING
 - CH - CHORD DISTANCE
 - D.B. - DEED BOOK
 - D.E. - DRAINAGE EASEMENT
 - I.E.E. - INGRESS AND EGRESS EASEMENT
 - L.A.E. - LIMITED ACCESS EASEMENT
 - L.S.E. - LANDSCAPE EASEMENT
 - LB - LICENSED BUSINESS
 - (N.R.) - NON-RADIAL
 - N.T.S. - NOT TO SCALE
 - O.R.B. - OFFICIAL RECORD BOOK
 - OST - OPEN SPACE TRACT
 - P.B. - PLAT BOOK
 - P.D.E. - PRIVATE DRAINAGE EASEMENT
 - POS. - PAGES
 - P.I. - POINT OF INTERSECTION
 - P.L.S. - PROFESSIONAL LAND SURVEYOR
 - P.O.B. - POINT OF BEGINNING
 - P.O.C. - POINT OF COMBINGEMENT
 - P.R.C. - POINT OF REVERSE CURVATURE
 - P.R.M. - PERMANENT REFERENCE MONUMENT
 - P.U.E. - PRIVATE UTILITY EASEMENT
 - R3 - 3.00' UTILITY EASEMENT RADIUS
 - (RAD) - RADIAL
 - (R.F.) - RADIAL TO FRONT LOT LINE
 - (R.R.) - RADIAL TO REAR LOT LINE
 - R/W - RIGHT-OF-WAY
 - S.E. - SIDEWALK EASEMENT
 - S.S.E. - SAFE SIGHT EASEMENT
 - T.S.E. - TEMPORARY SIDEWALK EASEMENT
 - U.E. - UTILITY EASEMENT
 - F.M.E. - FORCE MAIN EASEMENT
 - TO NON-RADIAL CURVE

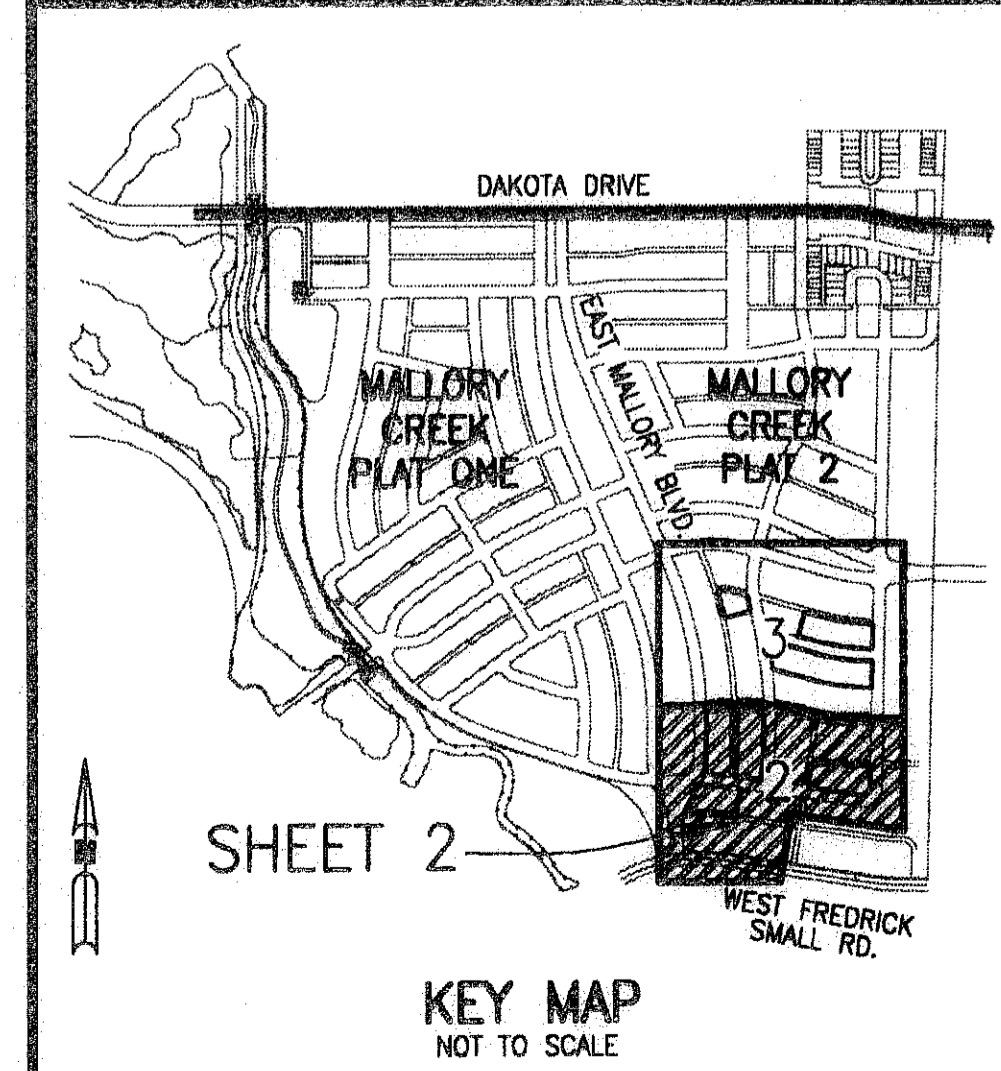


DETAIL "B"
NOT TO SCALE



DETAIL "A"
NOT TO SCALE

THIS INSTRUMENT PREPARED BY
WILBUR F. DIVINE, P.S.M. 4190, STATE OF FLORIDA
ARCADIS U.S., INC.
ENGINEERS PLANNERS SURVEYORS
2081 VISTA PARKWAY
WEST PALM BEACH, FLORIDA 33411
L.B. #7062



KEY MAP
NOT TO SCALE

NOTE - ALL LINES INTERSECTING CIRCULAR CURVES ARE RADIAL UNLESS NOTED.